



## State of Washington Prehospital Trauma Triage (Destination) Procedure

### Purpose

The Trauma Triage Procedure was developed by the Centers for Disease Control in partnership with the American College of Surgeons, Committee on Trauma. The guidelines have been adopted by the Department of Health (DOH) based on the recommendation of the State EMS and Trauma Steering Committee.

The procedure is described in the attached algorithm. The guidelines represent the current best practice for the triage of trauma patients. The algorithm allows EMS and Trauma Responders to quickly and accurately determine if the patient is a major trauma patient. Major trauma patients must be taken to the highest appropriate level trauma facility in the defined system within 30 minutes transport time (Air or Ground).

The “defined system” is the trauma system that exists within an EMS and Trauma Care Region.

### Explanation of Procedure

**Any certified EMS and Trauma responder can identify a major trauma patient and activate the trauma system.** This may include asking for Advanced Life Support response or air medical evacuation.

#### **Step (1) Assess the patient’s vital signs and level of consciousness using the Glasgow Coma Scale.**

Step 1 findings require activation of the trauma system. They also require rapid transport to the highest, most appropriate trauma center within 30 minutes transport time (ground or air). If unable to manage the patient’s airway, consider meeting up with an ALS unit or transporting to the nearest facility capable of definitive airway management.

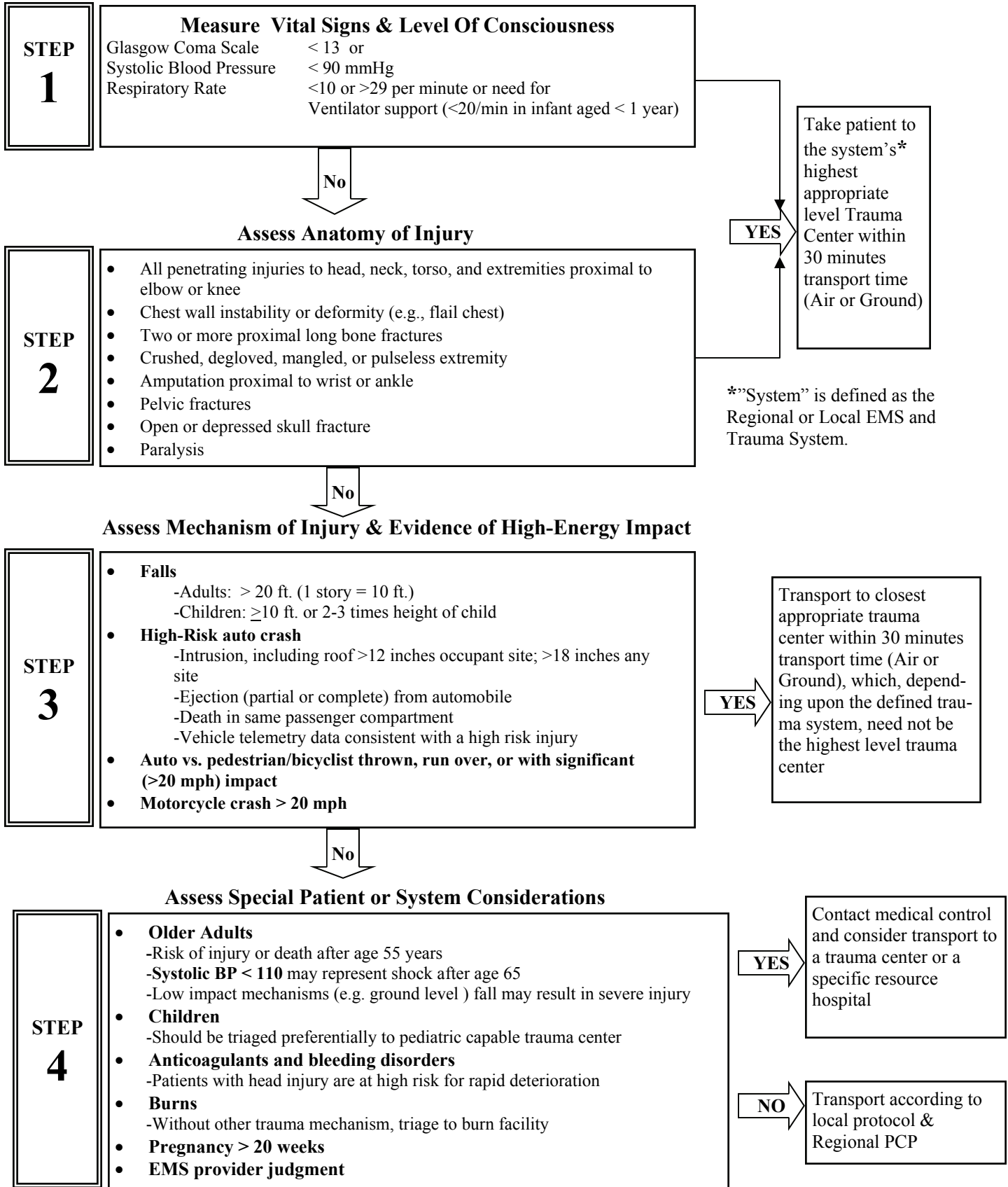
**Step (2) Assess the anatomy of injury.** Step 2 findings require activation of the trauma system. They also require rapid transport to the highest, most appropriate trauma center within 30 minutes transport time (ground or air). The presence of the specific anatomical injuries even with normal vital signs, lack of pain or normal levels of consciousness still require calling medical control and activating the trauma system.

**Step (3) Assess biomechanics of the injury and address other risk factors.** The conditions identified are reasons for the provider to transport to a trauma center. The destination trauma center need not be the highest level trauma center. Medical control should be contacted as soon as possible.

**Step (4) has been added to assess special patients or system considerations.** Risk factors coupled with “Provider Judgment” are reasons for the provider to contact Medical Control and discuss appropriate transport for these patients. In some cases, the decision may be to transport to the nearest trauma center.

Regional Patient Care Procedures (PCP’s) and Local County Operating Procedures (COPS) provide additional detail about the appropriate hospital destination. PCP’s and COP’s are intended to further define how the system operates. The Prehospital Trauma Triage procedure and the Regional Patient Care Procedures work in a “hand in glove” fashion to address trauma patient care needs.

# Washington State Trauma Triage Destination Procedures



**When in Doubt, Transport to a Trauma Center!**